

MAINTENANCE SHAFTS



Aymroo PVC Maintenance Shafts can replace traditional manholes, where approved, for cheaper and easier sewer system installs. Aymroo has supplied over 50,000 to date, saving thousands of hours for installers and thousands of dollars for project managers.

- Extensive range of configurations.
- Internal labelling provides vital information and traceability of maintenance shafts for years after installation.
- Designed for easy passage of camera and cleaning equipment.
- PVC construction compatible with 90% of all sewer installations across Australia and New Zealand -no need for adaptors to other materials.
- Superior hydraulic performance.
- Strong, durable and lightweight for easier handling and shipping.
- Choice of standard 225 or 300mm riser for extra clearance.
- Small footprint reduces required excavation.
- Available with standard Solvent Cement Joint (SCJ) or optional Rubber Ring Joint (RRI) types (adaptors for other pipe types available on request).

Quality Assurance

The Maintenance Shaft System is manufactured to the requirements of WSA137, plus it has been appraised by the Water Services Association of Australia and is recommended as an alternative to manholes by its members and associates. All major water boards have also approved the system.

Quality is guaranteed with SAI Global Standards mark #40084. Our system is suitable and recommended for installations across Australia.



Quality
ISO 9001
SAI GLOBAL



p 1300 057 588 | f 1300 052 857 | www.aymroo.com.au

PVC Plumbing Fittings | Maintenance Shafts | Fabrications | Civil Products

maintenanceSHAFTS

PRODUCT CATALOGUE

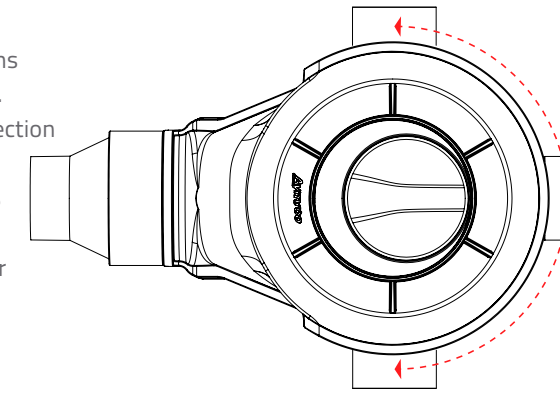
MAINTENANCE SHAFTS

PVC Central Axis Maintenance Shaft



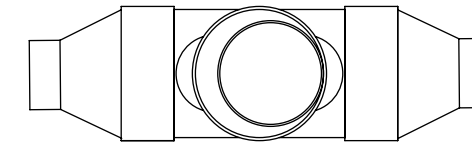
Maintenance Shaft

- Centrally terminating configuration for more flexibility.
- 225mm or 300mm riser connections for flexibility in various authorities.
- CNC machine cut for accurate deflection and grade fabricated inlets.
- PVC material directly suited to 80% of Australia's sewer pipe systems.
- Ability to adapt to RRJ PVC or other pipe systems.
- Entirely Australian made, moulded to fabrication.
- Tested & analysed to requirements of WSA137.



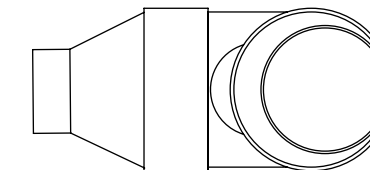
Inline

- Straight through MS.
- Fully moulded.
- Available with 225mm or 300mm Riser & Locking Cap.
- Available in 150/225/300mm.



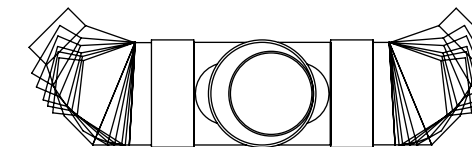
Terminal Elbow

- End of line Termination Elbow MS.
- Fully moulded.
- Available with 225mm or 300mm Riser & Locking Cap.
- Available in 150/225/300mm.



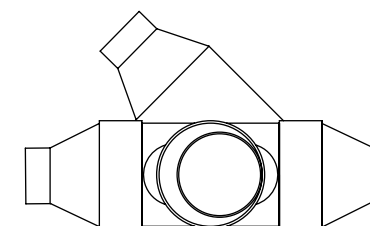
Elbow

- Change of direction MS.
- Moulded and fabricated.
- Available in 15°, 22°, 30°, 45°, 60°, 90°.
- Available with 225mm or 300mm Riser & Locking Cap.
- Available in 150/225/300mm.



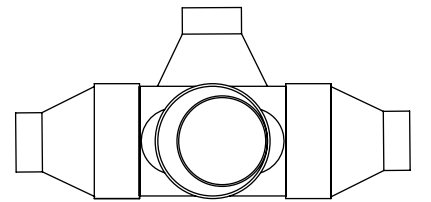
45° Junction

- 45° branch line Junction MS.
- Moulded and fabricated.
- Must be specified left or right (L or R).
- Available with 225mm or 300mm Riser & Locking Cap.
- Available in 150/225/300mm.



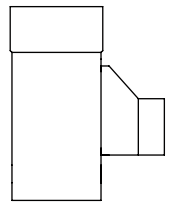
90° Junction

- 90° branch line Junction MS.
- Moulded and fabricated.
- Can be supplied in opposed configuration.
- Available with 225mm or 300mm Riser & Locking Cap.
- Available in 150/225/300mm.



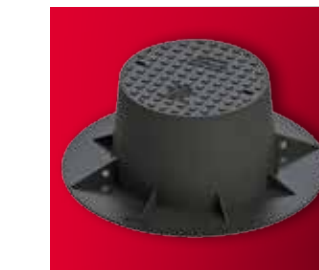
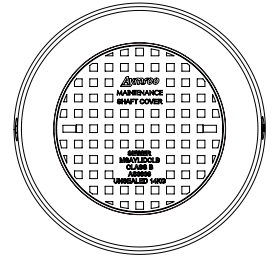
Riser Junction

- Inlet for house connection to MS.
- Fabricated fitting.
- M&F or F&F available.
- Made to suit maintenance equipment.



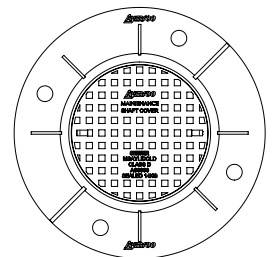
MS Covers – Class B and D

- Complies with AS3996.
- Gas and Water Tight.
- Compatible with all MS Risers.



MS Covers – Top Hat

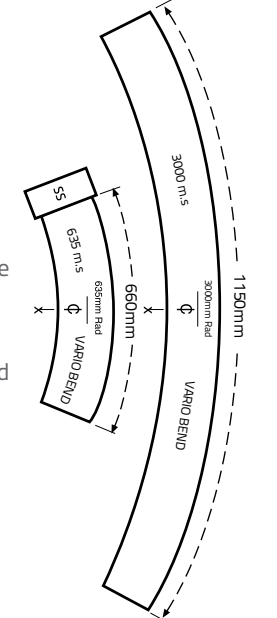
- Complies with AS3996.
- Gas and Water Tight.
- Compatible with all MS Risers.



Vario Bends

- DN150 x 635mm RADIUS M&F incl. curved socket adaptor.
- DN150 x 3000mm RADIUS M&M.

- Look up degree or % required.
- Obtain length required from chart, measure distance on centre line on heel of bend.
- Cut through pipe at 90° and remove swarf.
- For 635mm vario, solvent cement bend into supplied curved socket adaptor and then solvent cement into MS socket.
- For 3000mm vario, solvent cement end into MS socket.



For more detailed information visit www.aymroo.com.au